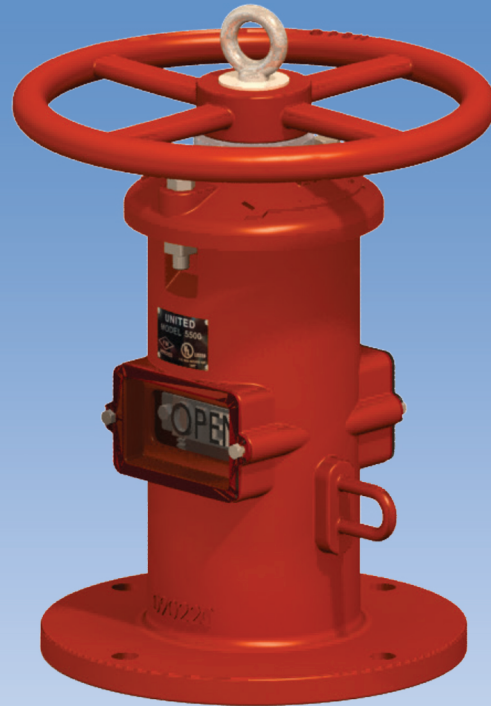


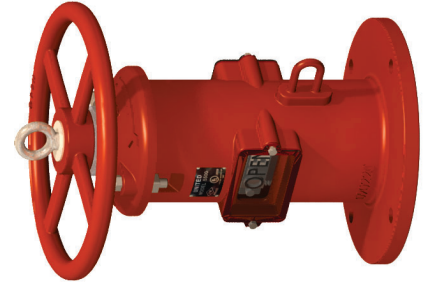
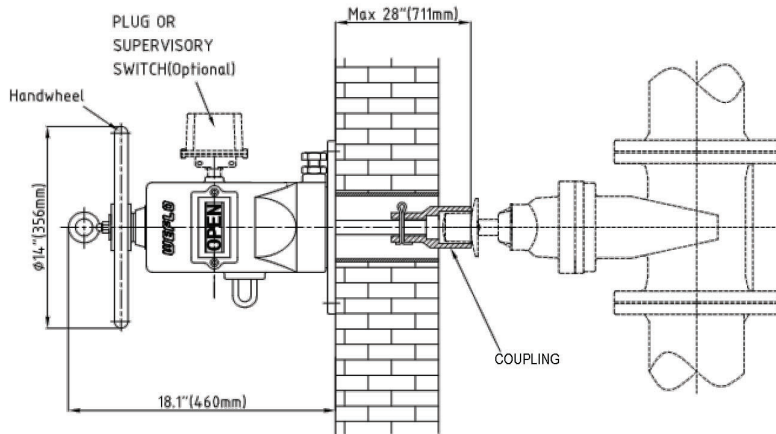
UNITED

Wall Indicator Post
MODEL 5500

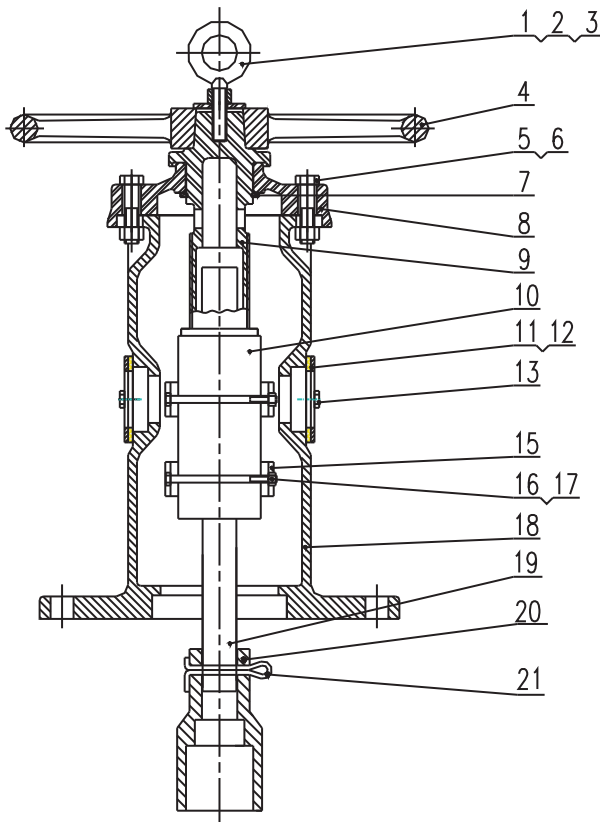
INSTALLATION & MAINTENANCE MANUAL



MODEL 5500- Wall Indicator Post



MATERIAL LIST



1	Eye Bolt	Carbon Steel ASTM A307B
2	Hex Nut	Carbon Steel ASTM A307B
3	Washer	Carbon Steel ASTM A570 Gr 33
4	Handwheel	Ductile Iron ASTM A536 Gr 65-45-12
5	Hex Cap Screw	Carbon Steel ASTM A307B
6	Square Nut	Carbon Steel ASTM A307B
7	Snap Ring	Stainless Steel AISI 1066
8	Cover	Cast Iron ASTM A126 Class B
9	Operating Nut	Bronze ASTM B62 C83600
		Stainless Steel AISI 304
10	Target Carrier Nut	Bronze ASTM B62 C83600
		Stainless Steel AISI 304
11	Window Glass	Plexiglass
12	Gasket	PTFE
13	Hex Nut	Carbon Steel ASTM A307B
14	Plug	Malleable Iron
15	Target	Cast Aluminum
16	Hex Cap Screw	Carbon Steel ASTM A307B
17	Hex Nut	Carbon Steel ASTM A307B
18	Body	Cast Iron ASTM A126 Class B
19	Stem	Carbon Steel AISI 1045
20	Crane Coupling	Ductile Iron ASTM A536 Gr 65-45-12
21	Cotter Pin	Stainless Steel AISI 304

INSTALLATION

NOTE: Ensure that the non-rising stem gate valve is in the fully open position before installing the Wall Post Indicator.

1. Make the Walk Through Hole

Make a clearance hole that is at least 4.7" (120mm) in diameter but not greater than 180MM (7.1") in diameter through the mounting wall. The clearance hole must be on-center and concentric with the operating nut of the non-rising stem gate valve. NOTE: A 4" / DN100 (114.3mm Outside Diameter) length of pipe can be used to line the inside of the through hole. Pipe of this diameter will fit snugly into a machined mating hole on the flange side of the Body (18) of the Wall Post Indicator.

2. Drill the Mounting Holes

Drill 4 equally spaced holes on a 10.5" (267mm) bolt circle into the mounting wall using a 3/4" (19mm) drill bit. The bolt circle must be concentric and on center with the operating nut of the non-rising stem gate valve.

3. Mount the Wall Post Indicator

Bolt the flange of the Body (18) of the Wall Post Indicator to the wall using 4 bolts provided by the customer.

4. Remove the Cover

With the Body (18) flange of the Wall Post Indicator securely bolted to the mounting wall, remove the Cover (8) by removing the two Bolts (5) and Nuts (6). Slide the Cover (8) off of the Wall Post Indicator body (18).

5. Insert and measure the Stem Rod

With the Cover (8) still separated from the Body (18), slide the Stem (19), Cotter Pin (21) and Crane Coupling (20) assembly through the Wall Post Indicator Body (18) and through the wall such that the Crane Coupling (20) fully engages with the operating nut of the non-rising stem gate valve. With the Crane Coupling (20) fully engaged on the operating nut of the non-rising stem gate valve, put a mark on the Stem (19) that is between 1.25" (32mm) below the top surface of the Body (18) but not more than 2" (50mm) above the top surface of the Body (18).

6. Cut the Stem Rod

Cut the stem rod at the mark made in Step 5.

7. Adjust the Target Plates

Adjust the "Open" Target Plates (15) such that they are squarely centered in the Windows (11) when the non-rising valve is in the fully open position, Repeat this procedure with the "Shut" Target Plates (15) when the non-rising stem gate valve is fully closed. Adjustment is made by loosening Hex Bolt (16) and Nut (17).

8. Re-assemble the Wall Post Indicator

Insert the cover (8) back onto the Body (18) such that the ears on either side on the Target Nut (10) fit into the grooves on the side edges of the Body (18). Tighten the two Nuts and Bolts (5) (6). Verify that the "Open" and "Shut" Target (15) is in the proper position by fully opening and closing the non-rising stem gate valve using the Handwheel (4). Adjust as necessary.

MAINTENANCE

Lubrication

Oil the bearing in the Body (18) at least once a year by adding several drops of oil in the hole located on the top of the Operating Nut (9).



UNITED Water Products

5355 Ramona Blvd.
Jacksonville, FL 32205
www.unitedwaterproducts.com